

CIC's Screening Services Include:

- Full array of Investigative Searches
- Drug Screening Services
- International Searches
- Web-based Technology
- Easy Re-checks
- Applicant Tracking Module
- No set-up fees or yearly minimum order
- Quick turn-around time
- Hands on Training

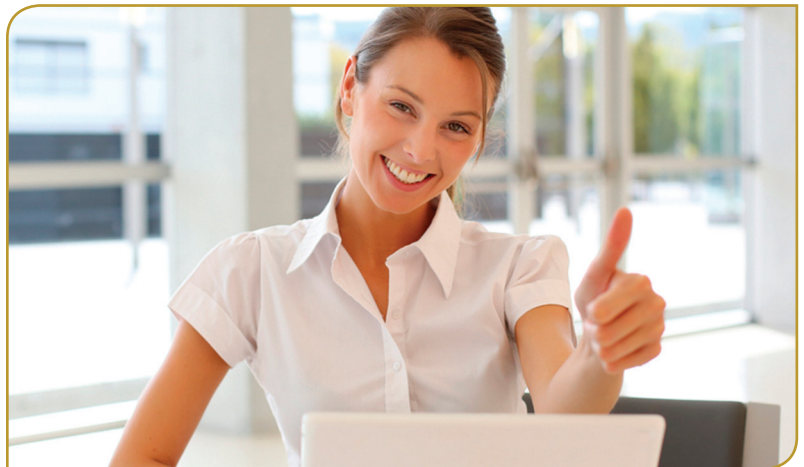
Hire the Right Person!

- 53% of job applicants falsify employment documents (SHRM)
- 11% of job applicants misrepresent why they left a former employer (US Chamber of Commerce)
- 30% of business failures are due to poor hiring practices (US Department of Commerce)

Improve your profitability by reducing employee turnover, training costs, worker's compensation and medical claims, employee theft and legal fees. Let CIC help you hire the right person!

Customized, Thorough & Compliant Pre-Employment Screening Services

CIC has been working hand-in-hand with Human Resource professionals and Business owners to provide them with pre-employment background and drug screening services that work for them. Our goal is to offer our clients new innovative ways of doing things to help streamline hiring processes and keep them in compliance with the myriad of laws that govern employment and employment screening.



Pre-employment screening just got a whole lot easier with CIC's on-line ordering and applicant tracking systems

Have you been looking for a way to, organize and automate your applicant information? CIC has the answer. Our pre-employment screening software with its optional ATS module can help streamline your pre-employment processes. With the added features of mouse-to sign technology and online applications and consent forms, you will be ahead of the game. Information from the application automatically populates the fields required for the background check — no more endless data entry with all its inherent problems. You'll save time and money by using our web-based system. Contact us to hear more. We know you'll be impressed by its capabilities and how easy it is to use.





70% of all Drug and Heavy Alcohol Users Hold a Job but Only 57% of Employers Test Job Candidates.

- Majority use off-site urine testing
- 9% used hair testing
- 8% used oral swab testing



Positive Rates Up!

- Amphetamine rates increased by 196% from 2002 to 2012
- Prescription Opiate use increased by 71% from 2002 to 2012
- Marijuana use has increased 6.2 % nationally and 20% in Washington and Colorado since 2012 when those states legalized it for recreational use.

A Comprehensive, Effective Drug Screening Program That Provides Results

CIC Supports Employer Efforts to Combat Drug Abuse in the Workplace

CIC is pleased to provide our clients with a comprehensive Drug Screening Program. We have partnered with a leading provider who has had extensive experience providing drug testing and clinical services to companies, government organizations and educational institutions for both regulated and non-regulated programs.

We offer:

- A lab network of over 30,000 federally certified SAMHSA labs
- MRO review of all test results
- Various types of testing including Urine, Hair, and Oral Swab testing
- Electronic Chain of Custody
- Test results reported as a stand-alone report or in the body of the background check report
- DOT testing, Re-checks and Random pulls
- Electronic Candidate Registration and Notification

Illicit drug use affects everyone, however, businesses with less than 500 people are particularly hard hit. About 10% of the people working in small businesses are currently using illicit drugs.

Can you afford to look the other way when so much is at stake?

It is estimated that drug abuse costs the nation over \$200 billion a year. It is the leading cause of accidents in the workplace and responsible for lost work time, increased healthcare and worker's compensation costs, increased absenteeism, and can negatively impact morale throughout the organization.

If you suspect you have a substance abuse problem at work, we have solutions for you.

For more information about our services, visit our website at www.corpintel.com or contact us at:

419.874.2201 / 800.573.2201

Corporate Intelligence
CONSULTANTS **CIC**

