

UTILITIES INCLUDED:

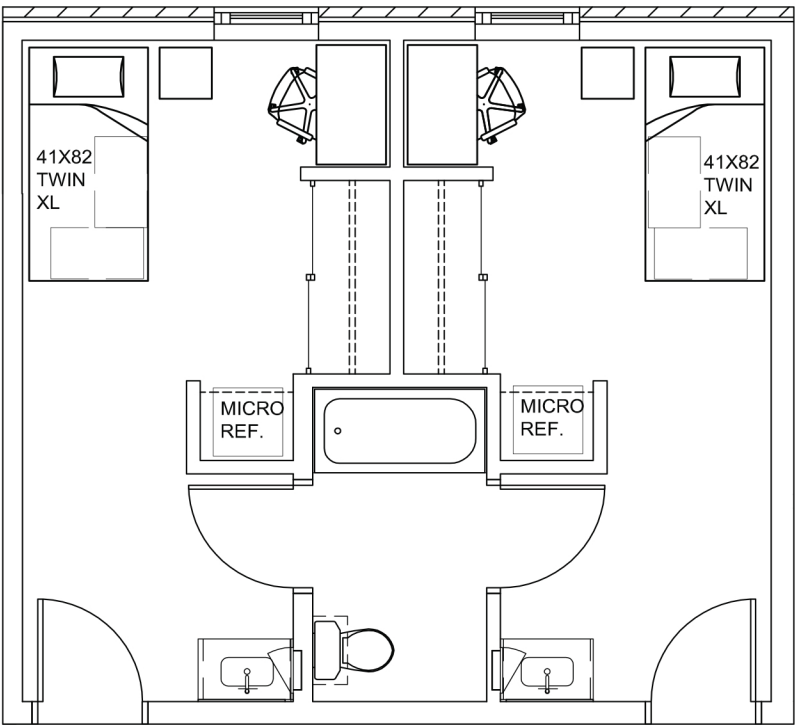
- Electricity
- Cable TV & Internet
- Water, sewer & trash

For additional information or to begin the reservation process, please email honorsacademicvillage@utoledo.edu.

The following rates are per bedroom, per person. All units are fully furnished.

SUMMER 2018 AVAILABILITY

Guest Housing Available: May 12, 2018 - August 11, 2018



2 BEDROOM | 1 BATHROOM SEMI-SUITE

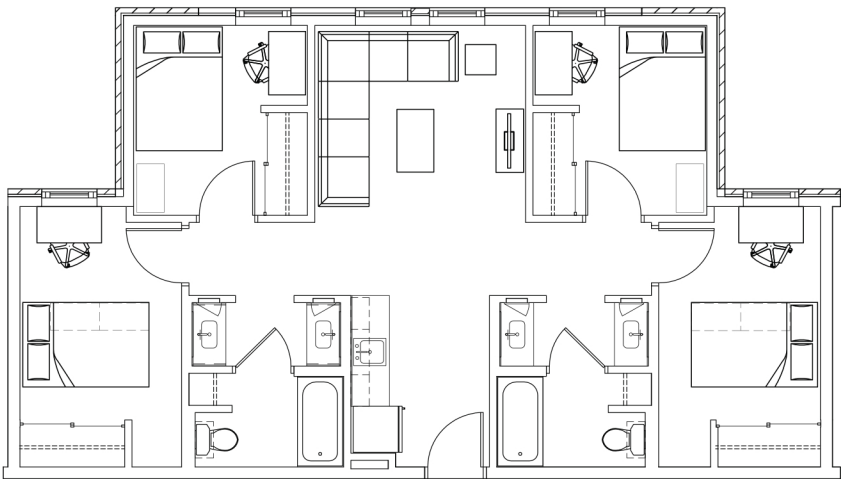
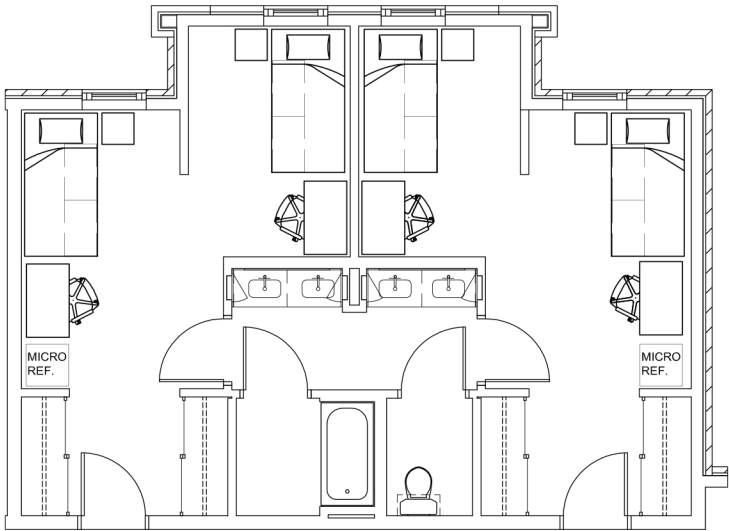
- Daily Rate.....\$25 per person
- Weekly Rate.....\$165 per person
- Monthly Rate.....\$630 per person

Managed by  AMERICAN CAMPUS COMMUNITIES

Rates, fees and utilities included are subject to change. Floor plans may vary. Select units may include ADA accessible features.

2 BEDROOM | 1 BATHROOM DOUBLE SEMI-SUITE

Daily Rate.....\$23 per person
Weekly Rate.....\$150 per person
Monthly Rate.....\$594 per person



4 BEDROOM | 2 BATHROOM

Daily Rate.....\$27 per person
Weekly Rate.....\$179 per person
Monthly Rate.....\$688 per person

Managed by  AMERICAN CAMPUS COMMUNITIES

Rates, fees and utilities included are subject to change. Floor plans may vary. Select units may include ADA accessible features.

To apply for your accommodation at Lofts at Gateway, you must submit a fully completed application along with the following fees:

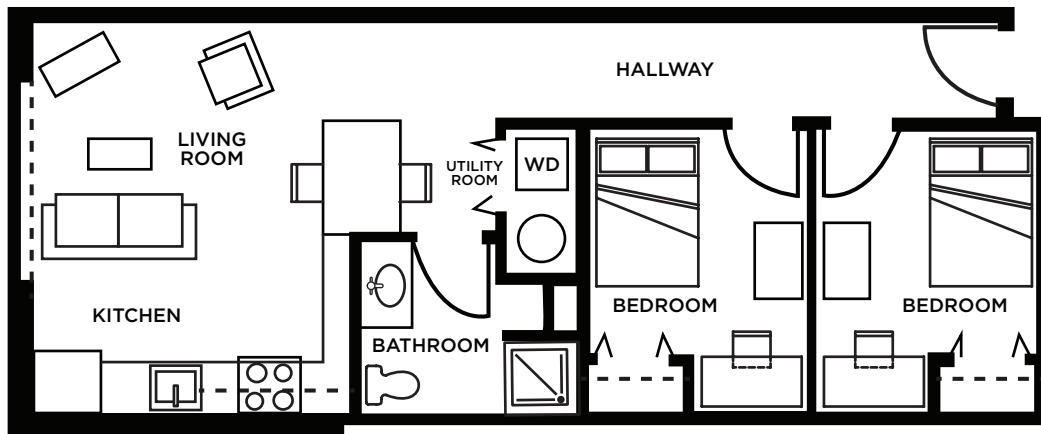
Non-refundable application fee: \$25

Refundable security deposit: \$100

The following installments are based on an individual liability lease and are listed per bedroom/per person. All accommodations at Lofts at Gateway are fully furnished.

Utilities Included:

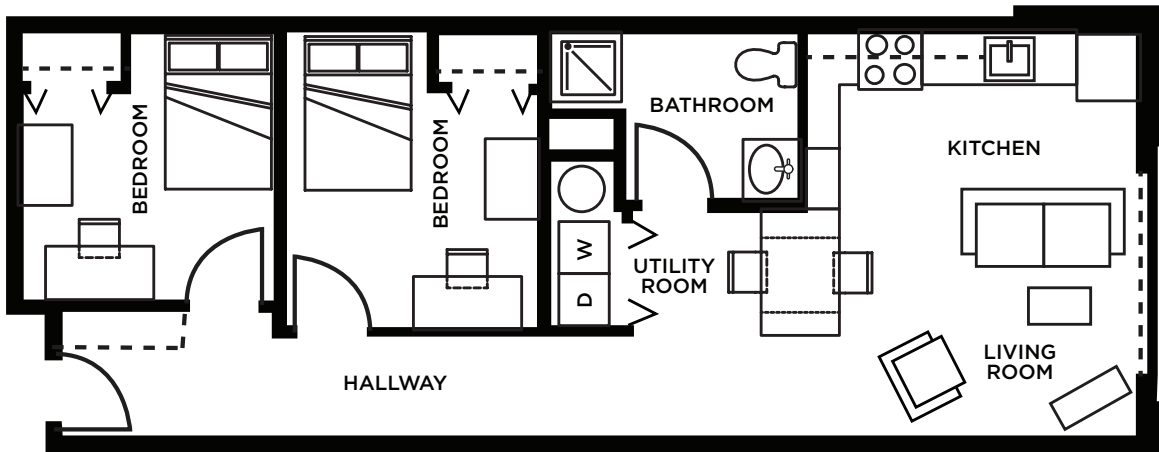
Internet
Cable TV
Trash



The Chelsea 2 Bedroom + 1 Bathroom

12 installments \$585

(First installment due on or before August 1, 2017)



The Heights 2 Bedroom + 1 Bathroom

12 installments \$585
 (First installment due on or before August 1, 2017)

Managed by  AMERICAN CAMPUS COMMUNITIES

1450 Sector Road | Toledo, OH 43607 | P 419.530.1330 | F 419.530.5455 | LoftsAtGateway.com | AmericanCampus.com



Rates/installments, fees & utilities included are subject to change. Rates/installments do not represent a monthly rental amount (and are not prorated), but rather the total base rent due for the lease term divided by the number of installments. Parking is available on a first-come, first-served basis. Some units may include ADA accessible features. While supplies last. Limited time only. See office for details.

To apply for your accommodation at Lofts at Gateway, you must submit a fully completed application along with the following fees:

Non-refundable application fee: \$25

Refundable security deposit: \$100

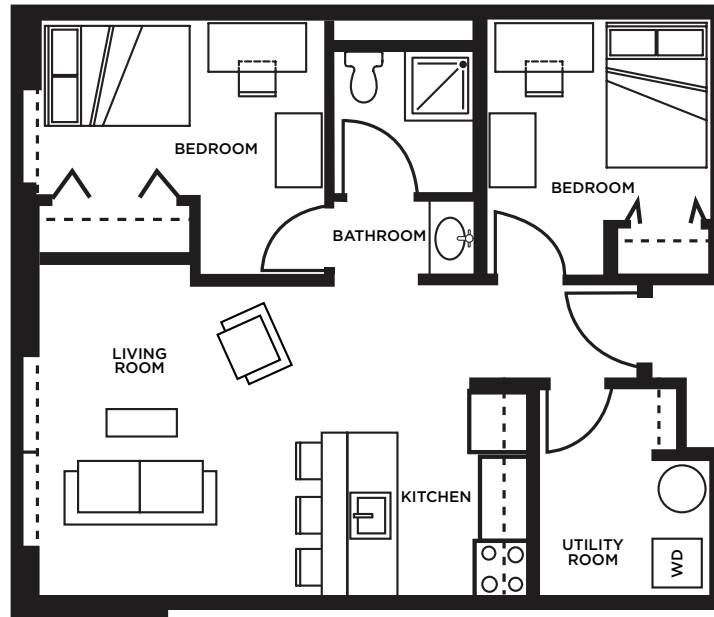
The following installments are based on an individual liability lease and are listed per bedroom/per person. All accommodations at Lofts at Gateway are fully furnished.

Utilities Included:

Internet

Cable TV

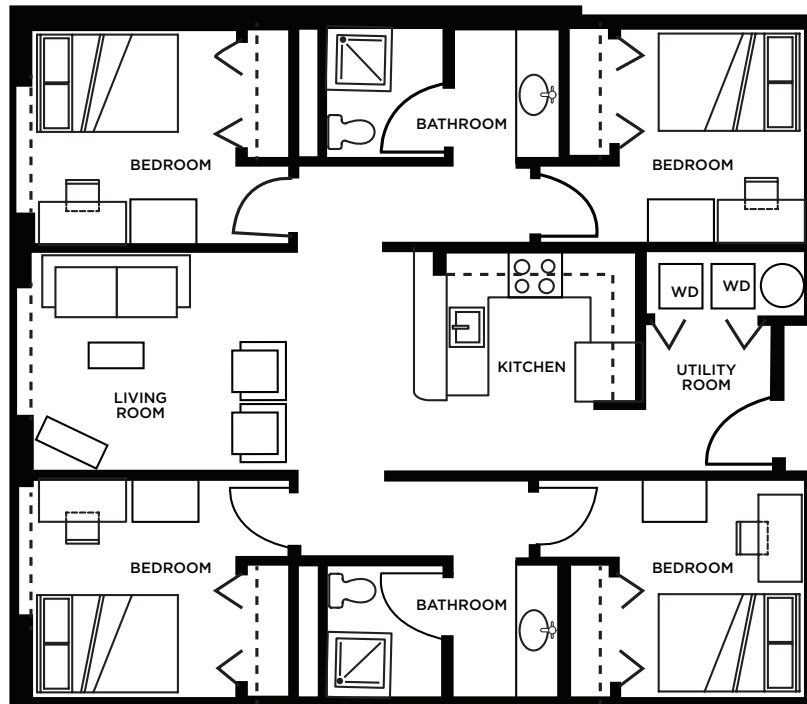
Trash



The SOHO 2 Bedroom + 1 Bathroom

12 installments \$619

(First installment due on or before August 1, 2017)



The Greenwich 4 Bedroom + 2 Bathroom

12 installments \$514
 (First installment due on or before August 1, 2017)

Managed by  AMERICAN CAMPUS COMMUNITIES

1450 Sector Road | Toledo, OH 43607 | P 419.530.1330 | F 419.530.5455 | LoftsAtGateway.com | AmericanCampus.com



Rates/installments, fees & utilities included are subject to change. Rates/installments do not represent a monthly rental amount (and are not prorated), but rather the total base rent due for the lease term divided by the number of installments. Parking is available on a first-come, first-served basis. Some units may include ADA accessible features. While supplies last. Limited time only. See office for details.